

ProM-LYSIS

SALINE-ELECTROLYSIS



- NEW CONCEPT
- SEAWATER OPERATABLE
- LESS SALT REQUIREMENT
- SALT DETECTION SYSTEM
- POWERED CELL TECHNOLOGY
- ONLY MADE IN EUROPE
- HIGH SAFETY STANDARD
- MICROPROCESSOR CONTROL

Applications

- Residential Pools
- Retirement Village pools
- Hotel & Resort

Benefits

- Increase generate efficiency
- Good production display as gram per hour
- Less cleaning need thanks to cell technology
- Less maintenance by auto-cleaning system by reverser polarity
- No risk from non-flow water issues with double safety detector
- Accuracy generator with microprocessor control

Completed cell with union



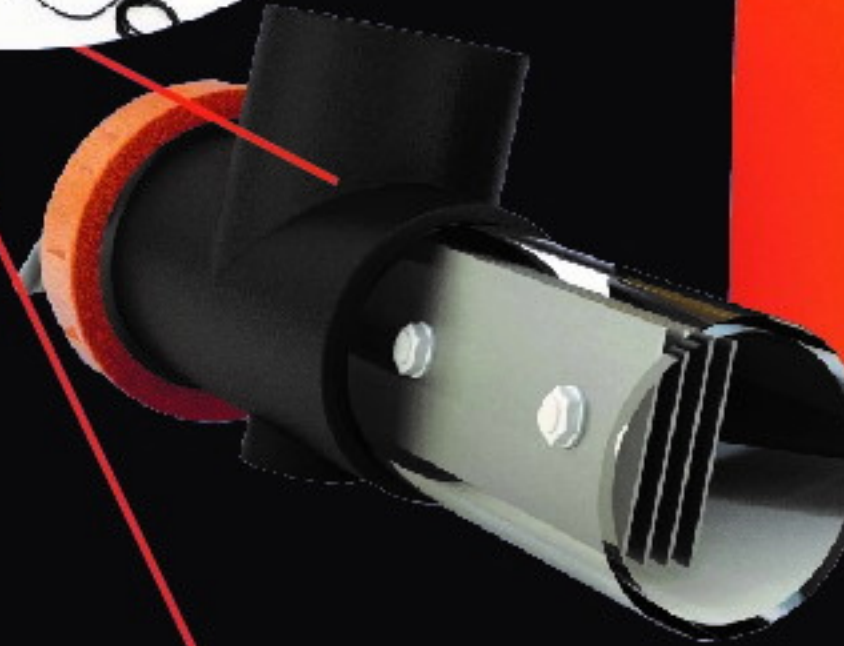
Salinity measure function



Cell Part Assembly



Detachable Screen connected via cable



Safety flow detection



On/Off Switch and connecting terminals

ProM-LYSIS

Innovated by **KTIPSOL**



ELECTRONIC BOX



DESCRIPTION	ProM Lysis 16	ProM Lysis 22	ProM Lysis 33
Max. production Cl ₂ /h	16 gr	22 gr	33 gr
Salt concentration	From 4 gr to 100 gr Na/Cl		
m ³ Pool (up to 28°C)	65 m ³	110 m ³	200 m ³
m ³ Pool (+28°C)	40 m ³	80 m ³	125 m ³
Display	2,8" TFT mobile (20 m) color display		
Power supply	110-230 V 50/60 Hz		
Outlet	8-15 A	8-20 A	10-15 A
Maximum consumption	120 w	160 w	150 w
Dimensions	270 x 220 x 115 mm		
Electronic box	Fireproof plastic ABS black		
Front cover	Plastic ABS blue		
Electronic	Microprocessor 32 bit		
Intensity control	Ampere + Volt		
Ventilation	Natural convection		
Automatic cleaning	Programmable from 1 to 24 hours		
Flow switch	Gas sensor		
Working hour counter	Yes - accessible by client		
Control production of disinfection	g/L		
Alarms	Insufficient salt / no flow / Communication error		
Production control by pool cover	Programmable 0-100% production of disinfection depending on pool cover open or closed		
Communication	NO		
110-230 V output control (3 outputs)	NO		
Potential-free output control (4 outputs)	NO		

ELECTROLYSIS CELL



DESCRIPTION	ProM Lysis 16	ProM Lysis 22	ProM Lysis 33
Electrolysis cell	4 Titanium cell plates MONOPOLAR	5 Titanium cell plates MONOPOLAR	7 Titanium cell plates BIPOLAR
Minimum flow	5 m ³ /h	7 m ³ /h	9 m ³ /h
Dimension cell plates	200 x 45 x 13,5 mm		
Material cell housing	PVC plastic transparent		
Cell fastener	Thread for an easy installation		
Diameter tube connection	63 mm		
Dimension cell	310 mm x ø 63 mm		
Cell cable size	1 (3 x 4) x 1,5 m		
Gas sensor	Incorporated in the cell		
Maximum pressure	4 Kg/cm ²		
Temperature	Low 0° C / 45° C Maximum		